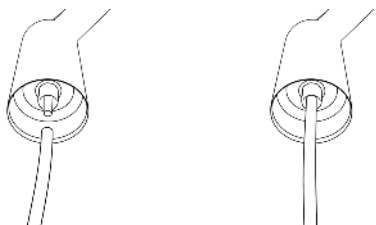


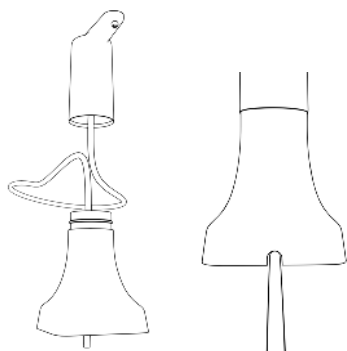
User Manual

Assembly

Connect supplied silicone tube into the appropriate fitting of the Tower bottom.



Pass the other end of the tube through the support base and hook the base itself to the Tower.



Water supply and monitoring

To dispense water, press the button at the top of the Tower, delivery is continuous. Press again the button to stop delivery.

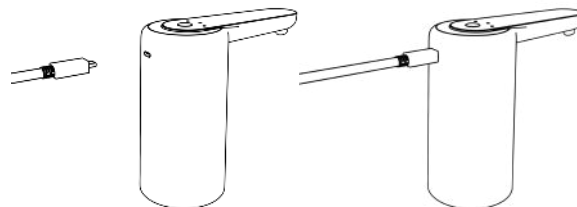


Tower is equipped with three different colored LEDs that indicate the quality of the water supplied, the control only works during delivery.
(We still recommend the use of the Tester for greater accuracy of the measurement).

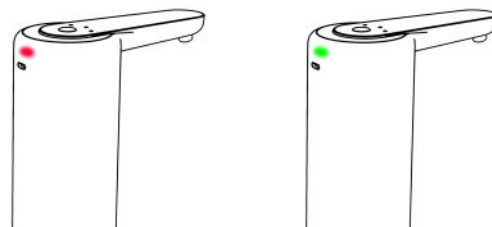
Blue Led	Good quality of delivered water	
Green Led	Check the filtering systems	
Red Led	Low quality water, change filtering systems.	

Battery charge

Charge Tower's battery with mini-USB cable supplied. Plug it into the rear port.



Full battery charge takes about 2 hours. Red LED signal means recharging is on going. At full charge the LED turns green.



Power	4W
Voltage	5V
Materials	ABS - Silicone
Battery	1200mA
Dimensions	138*68*290mm

ATTENTION

1. Do not use Tower to dispense liquids other than water.
2. Do not use Tower to dispense water hotter than 55 °C.
3. Do not immerse Tower in water to clean it.
4. Do not use fast chargers (Output greater than 4V)

Disposal

At the end of the product's life, it is advisable to minimize the possible effects of waste on the environment and human health, complying with local regulations on waste disposal and, where possible, to implement the separate collection of electronic equipment . Do not dispose of this product as unsorted municipal waste.