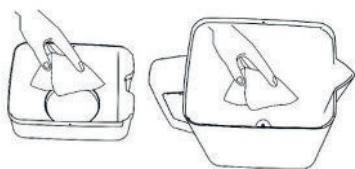
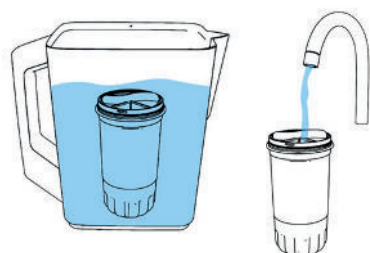


# User Manual

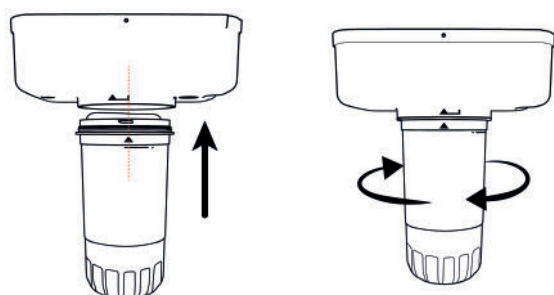
- 1** Clean inside the jug and the filter-holder.



- 2** Put the filter in the water, till covering, for 10 minutes.



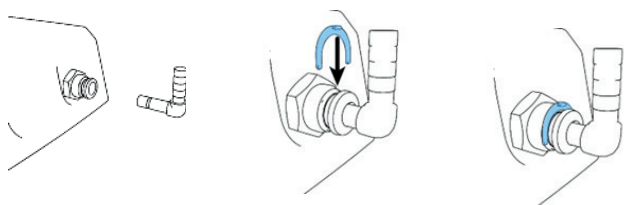
- 3** Plug the filter from bottom to top by aligning both arrows, then turn clockwise to align the bar. To remove the filter, turn it counterclockwise and keep it downwards.



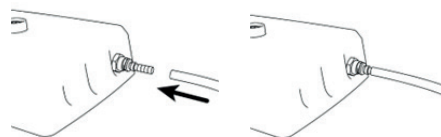
- 4** In case of connection of the DDL4 base to a further device, keep the blue clip holder on the rear fitting, push the fitting ring and pull off the cap.



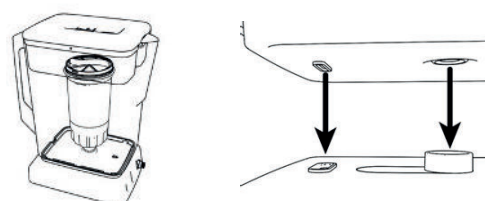
- 5** Take the straight or elbow connection and plug it into the Output, then secure it with the blue holder clip.



- 6** Plug in the tube and connect it to the Tower.



- 7** Place the JUG onto the base using both the guiding and the water output valve.



- 8** Test the performance and the state of the filter by using the supplied TESTER, housed in the handle. Check the quality of the water placing the TESTER in a sample of water, press the test button and check result as seen in table.



Evaluate the state of the filter using it as a reference the table below.

Measure in TDS	Measure in $\mu\text{S/cm}$	Stato del filtro
From 0 to 15 TDS	From 0 to 30 $\mu\text{S/cm}$	Filter good
From 15 to 30 TDS	From 30 to 60 $\mu\text{S/cm}$	Running out
> 30 TDS	> 60 $\mu\text{S/cm}$	To replace

## ATTENTION

- Do not use Tower to dispense liquids other than water.
- Do not use Tower to dispense water hotter than 55 °C.
- Do not immerse Tower in water to clean it.

## Disposal

At the end of the product's life, it is advisable to minimize the possible effects of waste on the environment and human health, complying with local regulations on waste disposal and, where possible, to implement the separate collection of electronic equipment. Do not dispose of this product as unsorted municipal waste.